



# ILEE® DIFFRACTIVE OPTICAL ELEMENTS

## SHORT DESCRIPTION

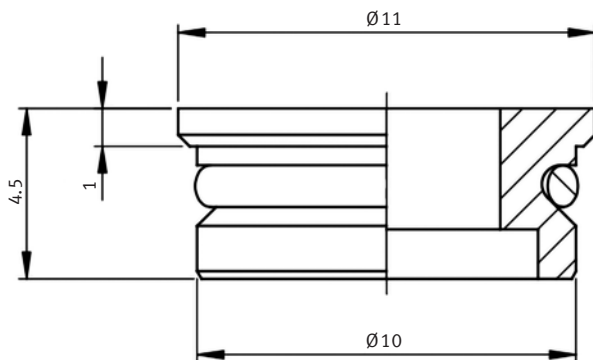
To generate patterns with a laser beam, arbitrary DOEs (Diffractive Optical Elements) can be plugged onto the ILEE® MICRO OPTIC laser.

## TECHNICAL DATA

Description	Pattern size @100 mm distance <sup>1)</sup>	Pattern angle <sup>1)</sup>	Optimum wavelength range	Order number	Image
Crosshair DE-R 245	17.6 mm	10.0°	570–690 nm	0019-39-92-01	

<sup>1)</sup> @ wavelength 635 nm

## DIMENSIONS (MM)



## OPTIONS

We can mount a wide range of DOEs in our DOE holder, e.g:

- Multi Lines
- Lines & Dot Lines
- Dot Matrix
- Circles & Dot Circles
- Random Dot Patterns
- Viewfinder
- Special Patterns

For more information please contact us.

## Rheinmetall Air Defence AG

Birchstrasse 155 · CH 8050 Zurich · Switzerland · Phone +41 44 316 2211  
 ilee.rad@rheinmetall.com · www.ilee.ch

